

maxumboats.com  
2009 MODEL LINEUP



MAXUM



A photograph of three white Maxum boats on a calm lake at sunset. The sun is low on the horizon, creating a warm orange glow and reflecting on the water. The boats are arranged in a line, with the largest boat on the right and two smaller ones to its left. The sky is filled with soft, golden clouds.

## CATALOG CONTENTS

### SPORT BOATS

- 02** Performance
- 04** Style
- 06** Versatility
- 08** Introduction
- 10** 1800 MX
- 11** 1800 SR3
- 12** 1900 SR3
- 13** 2000 SR3
- 14** 2100 SC3
- 15** 2200 SR3
- 16** 2400 SR3
- 17** 2400 SC3

### SPORT CRUISERS AND SPORT YACHTS

- 18** Introduction
- 20** 2500 SE
- 22** 2700 SE
- 24** 2900 SE
- 26** 3100 SE
- 28** 3700 SY
- 30** Interior Design
- 32** Color Options
- 34** Maxum Accessories,  
Options and Canvas

Exceptional power, smooth handling and impeccable design.  
Comforts and amenities that put every boating pleasure within reach.

**Achieve the next level with a Maxum.**





## PERFORMANCE

To achieve superior performance, you must harness the finest technology. Maxum's cutting-edge hull design, robust power options and advanced controls all deliver the feel and confidence of peak performance. It's what Maxum owners have come to expect.

### State-of-the-Art Helm Design

Maxum helms fit like a glove. Their innovative design results from precision ergonomics—intuitive throttle and shift control placement, snug seating, anti-glare dashpods and 360-degree visibility.

### SmartCraft® DTS and the Axis System

Maxum Cruisers feature the powerful option of Digital Throttle and Shift (DTS). "Fly-by-wire" technology quickens throttle response and softens gear shifts. Axis, MerCruiser's revolutionary joystick maneuvering system, couples with DTS to make tight maneuvering and docking silky smooth, effortless and precise.

### SmartCraft Instrumentation

SmartCraft gauges are the nerve center of your Maxum. Linked to the engine, helm controls, and to sensors measuring performance and environmental conditions, the SmartCraft network delivers accurate, real-time data for display on the fog- and scratch-resistant gauges.

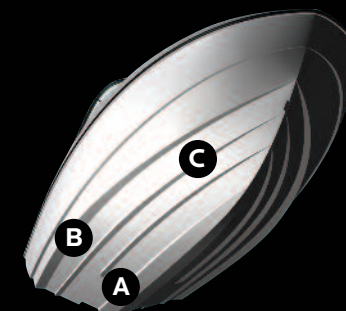
### MerCruiser® Sterndrives and Inboards

Among the most trusted names in boating, Mercury MerCruiser engines supply not only power and control when you need it, but peace of mind. Longer-range diesel power is also available on most Maxum models.

### Integrated Hull System

The Maxum integrated hull system is light-years ahead of the rest. Designing with Unigraphics CAD software for optimum ride, Maxum naval architects and engineers create hulls that are as much feats of technology as they are works of art.

- A. **Extended Running Surface** enhances performance and lift at lower speeds. Central to our Sport Boat design, the broader running surface creates more dynamic pull for watersports.
- B. **Tapered Chine** also promotes lift, which in turn improves fuel economy and running attitude. The specially designed taper helps to put a Maxum on plane quicker when towing skiers and wakeboarders.
- C. **Large Reverse Lifting Strakes** effectively channel and divert water flow along the hull, which greatly reduces resistance, boosts control and improves handling.







## STYLE

The sharp, contemporary look of a Maxum is unmatched on the water.

With the boldness to make a statement and the refinement to back it up, every Maxum has the power to impress while maintaining the cool of reserved sophistication.

### Always Gorgeous

The signature Maxum profile—sleek, streamlined and powerful—captivates from a distance. Up close, a Maxum is just as spellbinding in its fine details: stainless steel accents from bow to stern, and ornate cockpit tables and swim platforms made with real farmed teak, just to name a few.

### Lasting Looks

Maxum uses only the most stunning and durable materials. Cockpits are upholstered in custom-tailored vinyl with ActiveGuard™, which prevents stains and mildew damage. Maxum vinyl is also 20 percent stronger than industry standard fabrics and is backed by its own five-year warranty—all but eliminating the risk and hassle of tears.



### Sunbrella® Interior Fabrics

The cabins of Maxum Sport Cruisers and Sport Yachts feature designer décor from the Sunbrella interior collection. Sunbrella is known for its fresh, sophisticated palettes and durable fabrics. Maxum offers two styles to choose from, Baltic and Java Café.







## VERSATILITY

Maxum constantly redefines the possibilities of boating excitement. Flexibility is built in, so your Maxum is infinitely adaptable. Go ahead, live out your fantasies on the water.

### Adaptive Seating Options

The array of Maxum seating options—rotating helm seats with flip-up bolsters, convertible sunpad-loungers and more—allows you to adjust the layout to fit the moment. Multiple floorplans are available on many Sport Boats, while some Sport Cruisers offer filler cushions that transform the cockpit. But that's not all. Every Maxum features the Active Seating™ system. With Active Seating, you can instantly reconfigure the cockpit seating to match your next activity.

## ACTIVE SEATING

### Take Advantage of Every Inch

All the space on a Maxum is designed to be functional. On Maxum Sport Boats (except the 1800 MX), the combination of walk-through transoms, extended swim platforms and transom trunks with built-in seating bring life to a commonly overlooked area. The party just won't quit on Sport Cruisers, too, with dedicated cockpit entertainment centers.

### Optimized Storage Space

With anything and everything on the agenda, room to pack gear is essential. Beam-forward design creates greater storage capacity up front and in the cockpit. Deep in-deck ski lockers, dedicated table storage, and compartments under seats and in gunnels ensure that no toys get left behind.





## SPORT BOATS

Their crisp, responsive handling carves up the water. Their vibrant graphics and modern styling strike a dramatic profile. Their designs are roomy and ergonomic. Maxum Sport Boats have the power, the flair and the prowess to satisfy the most vivid on-water imagination.



# 1800 MX



Shown with optional wakeboard tower.  
Tower accessories not included.



- A.** Add an optional wakeboard tower to the 1800 MX to boost watersports into high gear.
- B.** The helm boasts a sporty design and convenient cup holder for the captain.
- C.** Portside back-to-back seating slides down to create a lounge with adjustable headrest.
- D.** Take along enough gear for any on-water adventure thanks to ample bow storage.

LENGTH	17'7"/5.36 m
BASE ENGINE	3.0L Alpha® I (135 HP)
MAX POWER	3.0L Alpha I (135 HP)
BEAM	7'0"/2.13 m
WEIGHT (w/base engine)	1,991 lbs/903 kg
DRAFT HULL	1'6"/.46 m
FUEL CAPACITY	21 gal/79.5 L



Standard Seating



B



C

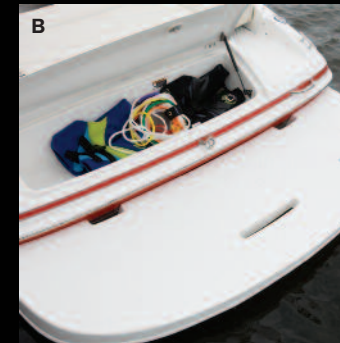


D

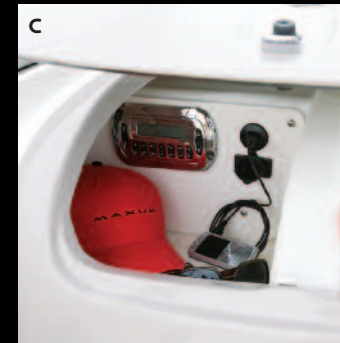
# 1800 SR3



A



B



C



D

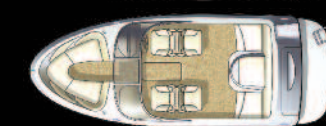
LENGTH	18'0"/5.49 m
LENGTH W/ SWIM	20'1"/6.12 m
BASE ENGINE	3.0L Alpha I (135 HP)
MAX POWER	4.3L MPI Alpha I (220 HP)
BEAM	7'7"/2.31 m
WEIGHT (w/base engine)	2,500 lbs/1,134 kg
DRAFT HULL	1'8"/.51 m
FUEL CAPACITY	28 gal/106 L



Standard Seating



Sport Seating



Dual Lounge Seating

- A.** The transom area and extended swim platform make it easy to get ready for watersports.
- B.** Pack everything from tow lines to PFDs inside the transom trunk with hydraulic lift.
- C.** The roomy dash storage is also a tech center: Stereo controls and MP3 connection are inside.
- D.** The trip from cockpit to water is quick with the 1800 SR3's walk-through transom.



# 1900 SR3



- A.** The 1900 SR3 packs the power options to give skiers and boarders the dream ride they're after.
- B.** The helm seat rotates aft and offers the captain a boost with its standard flip-up bolster.
- C.** A deep-welled transom trunk stows watersports gear right where you need it.
- D.** There's always room for more stuff with extra storage space beneath the walk-through transom.

<b>LENGTH</b>	19'0"/5.79 m
<b>LENGTH W/ SWIM</b>	21'0"/6.40 m
<b>BASE ENGINE</b>	4.3L Alpha I (190 HP)
<b>MAX POWER</b>	5.0L MPI Alpha I (260 HP)
<b>BEAM</b>	7'11"/2.41 m
<b>WEIGHT (w/base engine)</b>	2,987 lbs/1,355 kg
<b>DRAFT HULL</b>	1'9"/.53 m
<b>FUEL CAPACITY</b>	35 gal/132.5 L



Standard Seating



Sport Seating



Dual Lounge Seating



# 2000 SR3



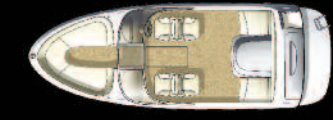
<b>LENGTH</b>	20'4"/6.2 m
<b>LENGTH W/ SWIM</b>	22'3"/6.78 m
<b>BASE ENGINE</b>	4.3L MPI Alpha I (220 HP)
<b>MAX POWER</b>	5.0L MPI Alpha I (260 HP)
<b>BEAM</b>	8'0"/2.44 m
<b>WEIGHT (w/base engine)</b>	3,153 lbs/1,430 kg
<b>DRAFT HULL</b>	1'8"/.51 m
<b>FUEL CAPACITY</b>	35 gal/132.5 L



Standard Seating



Sport Seating



Dual Lounge Seating

- A.** The padded engine cover includes a sturdy slide-out tray for beverages and snacks.
- B.** The dash sports brushed aluminum gauges that reflect refined style but not glare.
- C.** Back-to-back portside seating folds flat for optimal lounging space.
- D.** The 2000's wide bow includes an optional filter cushion to create an edge-to-edge sunlounge.



# 2100 SC3



- A.** The cabin features a pull-out filler cushion that transforms sleeping quarters into a seating area.
- B.** Sophisticated touches abound, like the optional drop-in teak table and stainless steel cockpit sink.
- C.** With the swim platform's optional real teak surface, upscale style reaches from bow to stern.
- D.** Opt for the Vintage Décor Package and swap freely between a teak table (B) and a broad filler cushion that creates a generous sunpad.

<b>LENGTH</b>	20'6"/6.25 m
<b>LENGTH W/ SWIM</b>	22'5"/6.83 m
<b>BASE ENGINE</b>	4.3L MPI Alpha I (220 HP)
<b>MAX POWER</b>	350 MAG MPI Alpha I (300 HP)
<b>BEAM</b>	8'3"/2.51 m
<b>WEIGHT (w/base engine)</b>	3,483 lbs/1,580 kg
<b>DRAFT HULL</b>	1'8"/.51 m
<b>FUEL CAPACITY</b>	55 gal/208.18 L

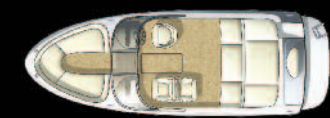


B

C

D

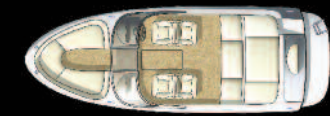
# 2200 SR3



Standard Seating



Sport Seating w/L-Lounge



Dual Lounge Seating

<b>LENGTH</b>	22'1"/6.73 m
<b>LENGTH W/ SWIM</b>	23'11"/7.29 m
<b>BASE ENGINE</b>	5.0L MPI Alpha I (260 HP)
<b>MAX POWER</b>	350 MAG MPI Bravo® III (300 HP)
<b>BEAM</b>	8'6"/2.59 m
<b>WEIGHT (w/base engine)</b>	3,740 lbs/1,696 kg
<b>DRAFT HULL</b>	1'8"/.51 m
<b>FUEL CAPACITY</b>	50 gal/189.3 L

- A.** The transom seat cushion makes suiting up for snorkeling and watersports comfy.
- B.** The dash compartment serves as storage space and cooler thanks to integrated drainage.
- C.** Meals and snacks may be taken in the bow or cockpit with the optional teak table.
- D.** Relax under the sun on the 2200's transom sunpad with flip-up headrest.

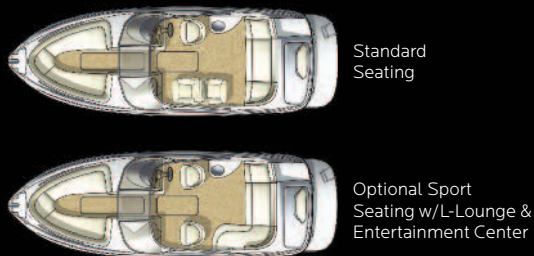


# 2400 SR3



- A. Take in the scenery from the 2400 SR3's extra wide bow, where there's room for the whole crew.
- B. Hang at the cockpit table for games and snacks, or make for the water through the transom door.
- C. Anti-glare gauges and a sporty steering wheel lend the helm a clean and distinctive look.
- D. The lockable head compartment includes dedicated storage space for the cockpit table.

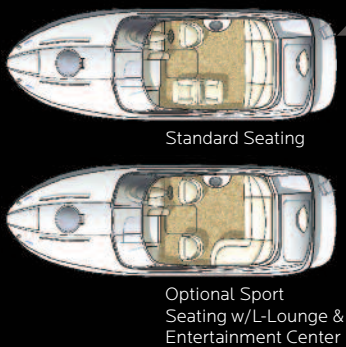
LENGTH	24'0"/7.32 m
LENGTH W/ SWIM	26'0"/7.92 m
BASE ENGINE	5.0L MPI Alpha I (260 HP)
MAX POWER	496 MAG MPI Bravo III (375 HP)
BEAM	8'6"/2.59 m
WEIGHT (w/base engine)	4,370 lbs/1,982 kg
DRAFT HULL	1'8"/.51 m
FUEL CAPACITY	70 gal/265 L
WATER CAPACITY	10 gal/37.9 L



# 2400 SC3



LENGTH	24'0"/7.32 m
LENGTH W/ SWIM	26'0"/7.92 m
BASE ENGINE	5.0L MPI Alpha I (260 HP)
MAX POWER	496 MAG MPI Bravo III (375 HP)
BEAM	8'6"/2.59 m
WEIGHT (w/base engine)	4,546 lbs/2,062 kg
DRAFT HULL	1'8"/.51 m
FUEL CAPACITY	70 gal/265 L
WATER CAPACITY	10 gal/37.9 L



- A. Deep and roomy, the cabin V-berth sleeps two or makes a cozy hangout on day trips.
- B. The optional cockpit entertainment center features a stainless steel sink above a cooler niche.
- C. Turn the optional L-lounge into an expansive sunning bed with the addition of filler cushions.
- D. The anchor hides away between uses within the foredeck anchor locker.





## SPORT CRUISERS AND SPORT YACHTS

Never has cruising been so liberating, so effortless—or looked better. The freedom, the control and the style of Maxum Sport Cruisers and Sport Yachts allow you to command the open water in ways you never thought possible.

Enjoying the highest level of boating begins in the cockpit. At the sport-styled helm, you can experience the feel of true performance and handling. Spacious entertainment areas and adjustable seating create the ideal open-air environment: warm, comfortable and inviting.



# 2500 SE



**A.** Simply flip the aft backrest and Maxum's highly versatile Active Seating transforms the 2500 SE's transom into a cushioned, rear-facing seating area.

**B.** The galley brings all your culinary needs together: an integrated fridge, microwave, sink and stovetop. Also in easy reach are controls for onboard entertainment.

**C.** A sliding insert provides a sturdy surface for preparing open-air meals at the cockpit entertainment center; when removed, it reveals a deep sink.

**D.** The helm offers sleek, easy-to-read gauges to monitor vessel performance, and well-located, ergonomic steering and throttle controls for confident cruising.

**E.** The forward seating area with dining table converts into a plush V-berth on overnight trips. Along with the queen-size mid-berth, the 2500's cabin sleeps four.



<b>LENGTH OVERALL</b>	24'7"/7.49 m
<b>BASE ENGINE</b>	5.0L MPI Bravo III (260 HP)
<b>MAX POWER</b>	350 MAG MPI Bravo III (300 HP)
<b>BEAM</b>	8'6"/2.59 m
<b>WEIGHT (w/base engine)</b>	5,969 lbs/2,708 kg
<b>DRAFT HULL</b>	1'10"/.56 m
<b>BRIDGE CLEARANCE MAX</b>	9'7"/2.92 m
<b>FUEL CAPACITY</b>	70 gal/265 L
<b>HOLDING TANK CAPACITY</b>	20 gal/75.7 L
<b>WATER CAPACITY</b>	20 gal/75.7 L
<b>SLEEPING CAPACITY</b>	4



Exterior Layout



Interior Layout



# 2700 SE



**A.** Stainless steel faucet and fixtures dress up the fully enclosed head, while the seamless molded fiberglass liner creates a crisp look that's easy to clean.

**B.** There's room for two at the helm with the swiveling captain's bench seat. Raise the flip-up bolster for a more aggressive stance at the wheel.

**C.** Keep perishable snacks and beverages—or perhaps a bottle of sunblock—chilled and in reach above deck with the 2700 SE's optional cockpit refrigerator.

**D.** The galley exudes style, with a deep stainless steel sink, tinted pantry cabinets and richly colored countertop. The stovetop doubles as a food and drink prep area.

**E.** Shown with V-berth cushions in place, the forward cabin can either sleep two or convert into a dining area with the addition of a drop-in table.



<b>LENGTH OVERALL</b>	27'0"/8.23 m
<b>BASE ENGINE</b>	5.0L MPI Bravo III (260 HP)
<b>MAX POWER</b>	350 MAG MPI Bravo III (300 HP)
<b>BEAM</b>	8'6"/2.59 m
<b>WEIGHT (w/base engine)</b>	6,784 lbs/3,077 kg
<b>DRAFT HULL</b>	1'11"/.58 m
<b>BRIDGE CLEARANCE MAX</b>	9'7"/2.92 m
<b>FUEL CAPACITY</b>	85 gal/321.7 L
<b>HOLDING TANK CAPACITY</b>	20 gal/75.7 L
<b>WATER CAPACITY</b>	20 gal/75.7 L
<b>SLEEPING CAPACITY</b>	4



Exterior Layout



Interior Layout



# 2900 SE



**A.** Add some heat to your onboard dinner parties with the help of the optional electric grill, conveniently located in the cockpit entertainment center next to the sink.

**B.** Located opposite the cockpit entertainment center, the aft lounge area boasts an optional removable teak table and a drop-down backrest for full-on reclining.

**C.** The galley's ample storage accommodates full-size dinnerware. Handsome wood dresses up drawers and cabinets and complements a dark countertop.

**D.** Adding optional Digital Throttle and Shift (DTS) and navigation equipment to the SmartCraft platform makes the helm a fully state-of-the-art control center.\*

**E.** There's no trade-off of lounge space and sleeping quarters: A privacy curtain hides the V-berth, and the dinette table removes to create another sleeping spot.



Exterior Layout



Interior Layout

<b>LENGTH OVERALL</b>	30' / 9.14 m
<b>BASE ENGINE</b>	T-4.3L MPI Bravo III (T-220 HP)
<b>MAX POWER</b>	T-350 MAG MPI Bravo III (T-300 HP)
<b>BEAM</b>	9'11" / 3.02 m
<b>WEIGHT (w/base engine)</b>	10,187 lbs / 4,621 kg
<b>DRAFT HULL</b>	2'3" / .69 m
<b>BRIDGE CLEARANCE MAX</b>	9'9" / 2.97 m
<b>FUEL CAPACITY</b>	125 gal / 473.1 L
<b>HOLDING TANK CAPACITY</b>	30 gal / 113.6 L
<b>WATER CAPACITY</b>	30 gal / 113.6 L
<b>SLEEPING CAPACITY</b>	6



\* New for 2009, the 2900 SE may be outfitted with the all-new Axius joystick maneuvering system.



# 3100 SE



**A.** A solid-surface counter and stainless steel sink boost the style factor within the 3100 SE's spacious head. The vanity's guard rail keeps toiletries secure.

**B.** Mercury's innovative SmartCraft system can include Digital Throttle and Shift (DTS), which takes the challenge out of operating a large boat.

**C.** With a fully equipped cockpit entertainment center, meals go topside. A fridge, grill and sunken ice bucket opposite add the elements of classy, open-air dining.

**D.** Cruising comes naturally at the helm of the 3100 SE. Gauges, GPS, throttles and the new joystick-controlled Axis System are well placed and close at hand.\*

**E.** Banquette-style dining, dedicated wine storage racks, lamp and overhead lighting, and plentiful cabinet space truly set the 3100's cabin apart from the rest.



\*The Axis System pairs with the 3100 SE's base engine and above, along with optional DTS controls.



<b>LENGTH OVERALL</b>	33'4"/10.2 m
<b>BASE ENGINE</b>	T-5.0L MPI Bravo III (T-260 HP)
<b>MAX POWER</b>	T-496 MAG MPI Bravo III (T-375 HP)
<b>BEAM</b>	10'7"/3.23 m
<b>WEIGHT (w/base engine)</b>	12,838 lbs/5,823 kg
<b>DRAFT HULL</b>	2'6"/.76 m
<b>BRIDGE CLEARANCE MAX</b>	10'8"/3.25 m
<b>FUEL CAPACITY</b>	165 gal/624.6 L
<b>HOLDING TANK CAPACITY</b>	30 gal/113.6 L
<b>WATER CAPACITY</b>	30 gal/113.6 L
<b>SLEEPING CAPACITY</b>	4



Exterior Layout



Standard Interior Layout



Interior with Optional Enclosed Berth



# 3700 SY



**A.** The mix of fine wood paneling and cutting-edge appliances like an integrated flatscreen TV make the galley a site for cooking and a sight to behold.

**B.** The ergonomic helm of the 3700 SY puts the captain in high command, thanks to a raised perch offering 360-degree visibility and smartly placed controls.

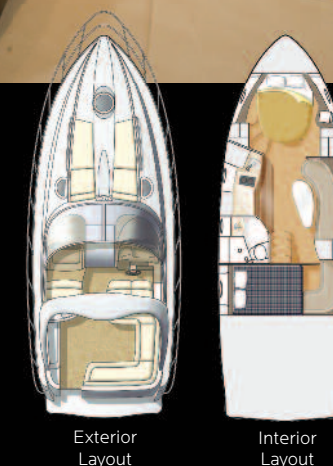
**C.** The forward master stateroom is wide enough to walk around the queen-size island berth. All-new bedding fabrics strike a stylish and contemporary look.

**D.** Cockpit space abounds on the 3700. A diner-style U-shaped bench with table sits opposite the fridge-and-sink entertainment area, making outdoor dining easy.

**E.** Light fills the salon through numerous side and overhead windows. Hardwood flooring surrounds the galley area for a clean look and easier clean-up.



<b>LENGTH OVERALL</b>	37'2"/11.33 m
<b>BASE ENGINE</b>	T-6.2L MPI (T-320 HP)
<b>MAX POWER</b>	T-8.1L HO (T-420 HP)
<b>BEAM</b>	13'0"/3.96 m
<b>WEIGHT (w/base engine)</b>	19,320 lbs/8,764 kg
<b>DRAFT HULL</b>	2'4"/.71 m
<b>BRIDGE CLEARANCE MAX</b>	11'0"/3.35 m
<b>FUEL CAPACITY</b>	300 gal/1,136 L
<b>HOLDING TANK CAPACITY</b>	45 gal/170.3 L
<b>WATER CAPACITY</b>	80 gal/302.8 L
<b>SLEEPING CAPACITY</b>	6







## SPORT CRUISER AND SPORT YACHT INTERIOR DESIGN

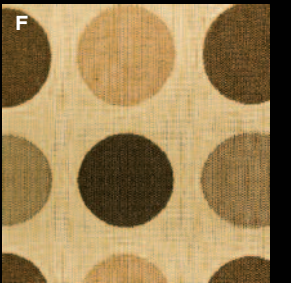
Other boats just don't compare. From the soft carpeting, to the plush bedding, up to the rich cabinetry and countertops, Maxum cabins offer the perfect atmosphere to unwind.

### Fabrics by Sunbrella®

Plush, durable and contemporary, Sunbrella interiors are at the forefront of modern boating style. Color palettes are clean and elegant, while fabrics resist fading and fight stains. With two themes to choose from, Baltic and Java Café, it's easy to create a cabin that reflects your tastes.

### Vintage Décor Package

The cabins of Maxum Sport Cruisers and Sport Yachts feature stainless steel portlights and galley appliances, teak and holly flooring, solid surface countertops, and generous use of wood throughout to create a stylish living space that is warm, classic and easy to keep clean.

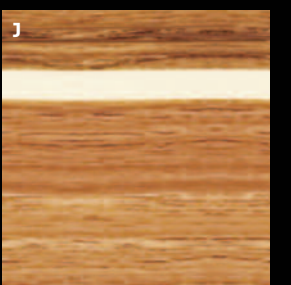
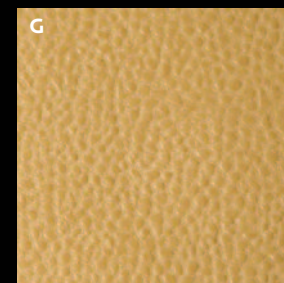
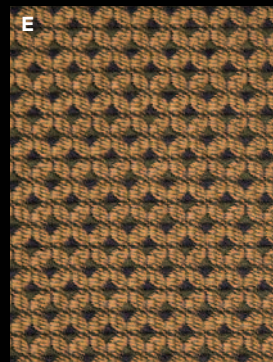


### Sunbrella Baltic Interior

- A. Pillows
- B. Pillows
- C. Gunnel Pads
- D. Curtains
- E. Bedding

### Sunbrella Java Café Interior

- F. Pillows
- G. V-berth and Dinette Seating
- H. Bedding
- I. Comforter Cover
- J. Teak and Holly Flooring



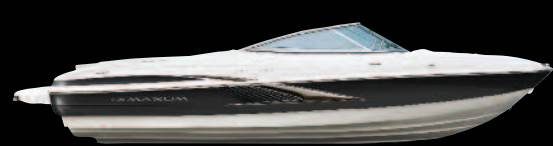




## SPORT BOAT COLOR AND DESIGN OPTIONS

Hullside graphics on Maxum Sport Boats come in two themes, Sport and Style, and an array of colors—creating seven dazzling choices. Sport Boats up to the 2000 SR3 include a standard painted trailer; larger Sport Boats offer a variety of trailer options.

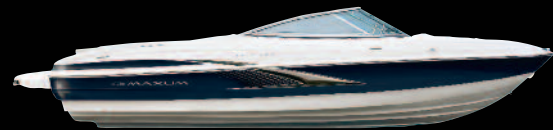
### SPORT COLOR OPTIONS



Black



Red



Blue



Yellow

### STYLE COLOR OPTIONS



Black



Blue



Red



## SPORT CRUISER AND SPORT YACHT COLOR AND DESIGN OPTIONS

Beauty may be skin deep, but style just begins at the surface. Choose from Kingplank and Hullstripe exterior options in a range of sophisticated colors.

### HULLSTRIPE COLOR OPTIONS



Black



Blue



Green

### KINGPLANK COLOR OPTIONS



Black



Blue



Green



# MAXUM ACCESSORIES, OPTIONS AND CANVAS

Choose from a range of options designed to help complete the total Maxum experience. Maxum Sport Boat and Cruiser canvases feature color-matched Sunbrella fabrics. Some options may be standard or not available on certain models.



**Bimini top**  
Shade and cool down the crew on sunny days without blocking the breeze or the view.



**\*Bimini top with enclosure and camper canvas**  
Converts a cruiser cockpit into a shaded patio that keeps pests at bay.



**Bow cover**  
Durable, stain-resistant fabric easily snaps in to create a tight seal and protect the bow from leaks and damage.



**Cockpit canvas cover**  
Custom-fitted canvas keeps the cockpit clean and dry when your Maxum is not in use.



**\*Convertible top with side and aft canvas with enclosures**  
Versatile and durable, this canvas option can simply cover or enclose the entire cockpit.



**Carpet runners**  
Tough yet soft on feet, carpet sections snap in and out easily, making clean-up a cinch.

\*Full canvas enclosures should only be used when boat is anchored or at rest.



**Bow filler cushions**  
Drop in to instantly add more forward lounge space.



**Wakeboard tower**  
Reach new heights with your watersports. (Racks and speakers not included. Optional integrated bimini top available, except on 1800 MX.)



**JBL® sound system upgrade (transom and helm controls, 1GB digital storage, USB input)**  
Bring your MP3 device along for the ride or copy your playlist to the onboard hard drive.



**Pop-up cleat**  
Creates a clean, sleek profile when flush, and a sturdy hitch for dock lines and bumpers when raised.



**Digital depth finder**  
Stay on top of water depth changes with this easy-to-read dash-mounted unit.



**Split bow rail**  
Safely board and exit the boat at the bow.



**Real teak transom swim platform**  
Adds a rich, sophisticated look to the swim platform and needs minimal maintenance.



**Real teak cockpit table**  
Meals on your Maxum will always be served with class on this handsome addition to the cockpit.





**LCD TV/DVD with single disc DVD player**  
Transforms a Sport Cruiser's salon into a below-deck theater.



**Windlass**  
Motorized to take the effort out of raising the anchor. Also adds a stylish detail to the foredeck.



**Cockpit refrigerator**  
Keep refreshments close by without hauling around a cooler. Also minimizes trips to the cabin for snacks.



**Head featuring VacuFlush® and macerator**  
Electric head system requires no manual effort.



**Axis**  
Take command out on the water with MerCruiser's all-new joystick steering system, available on twin-engine models.



**Generator**  
Powers your longest journeys so you're never without the essentials. Integrated sound shielding keeps noise to a minimum.



**Extended swim platform (shown with optional real teak; available with white or black accent)**  
Handsome, durable and useful.



**Radar arch**  
Adds to the sharp look of a cruiser while providing a place to mount navigation equipment.



**Diesel engine**  
Offers increased fuel efficiency, lower operating costs and longer cruising range.



**Digital Throttle and Shift (DTS)**  
Provides effortless shifting and docking assistance.



**Foredeck cushions**  
Be comfortable while relaxing and catching rays on the foredeck sunpad.



**Northstar Navigation Systems Packages**  
With basic and premium upgrades available, navigate any waters with total confidence. Packages include large-screen displays, worldwide chartplotting and long-range communications gear.



**Spotlight with cover**  
Stylish and functional, the foredeck spotlight aids in navigation on night cruises.



**Electric grill**  
Expand your menu of onboard meals by taking barbecues to the water.



**Cabin door screen**  
Lets in the breeze but none of the pests.



**Radar/sport arch**  
Convenient for mounting navigation equipment and electronics or for attaching a towrope.

Information contained within this publication is believed to be correct at time of printing. Note: Not all accessories shown in pictures or described are standard equipment or even available as options. Options and features are subject to change without notice. Not all model year boats may contain all the features or meet specifications described herein. All people capacity ratings are based on U.S. Coast Guard certifications. Capacity ratings using international or alternate certification standards may result in varying capacities. All weight specifications are approximate. Confirm availability of all accessories and equipment with an authorized Maxum dealer prior to purchase. Maxum is a BFBC Company. ©2009 BFBC Inc. Printed in the U.S.A.